



Application Note AN-60001: Using TAMS IO Products with the Agilent IO Libraries Suite 14

January 14, 2005

This document describes how to install TAMS IO Products with the Agilent IO Libraries Suite 14 (E2094N).

This document is applicable to the following TAMS IO Products:

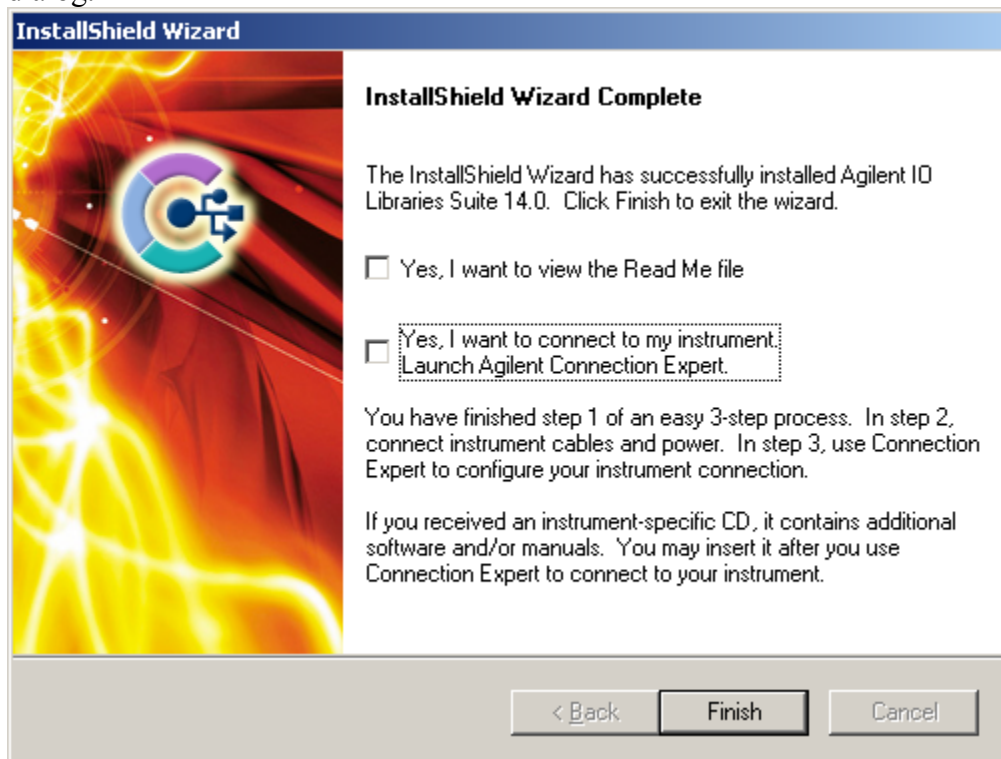
- TAMS 63488 USB GPIB
- TAMS 61622 PCI GPIO
- TAMS 60622 PCI GPIO
- TAMS 60488 PCI GPIB

In December 2004, Agilent Technologies released the “Agilent IO Libraries Suite 14” (E2094N), which is the successor to the “Agilent IO Libraries M.01.01” (E2094M). The Agilent IO Libraries Suite 14 introduced a new utility called the “Agilent Connection Expert” also known as ACE. This utility replaces the functionality found in IO Config (iocfg32.exe) and VISA Assistant (va.exe).

ACE automatically identifies and configures Agilent IO Interfaces. ACE currently does not automatically identify or configure TAMS IO Interfaces. To use TAMS IO Interfaces with the Agilent IO Libraries Suite 14, you need to configure the TAMS IO Interfaces using the Agilent IO Config utility (iocfg32.exe). This is the same configuration process that was used in previous versions of the IO Libraries. Once the TAMS IO Interfaces are configured, then ACE can be used to communicate with instruments. However, any configuration changes will still require the use of the IO Config utility.

Installation and Configuration Procedure

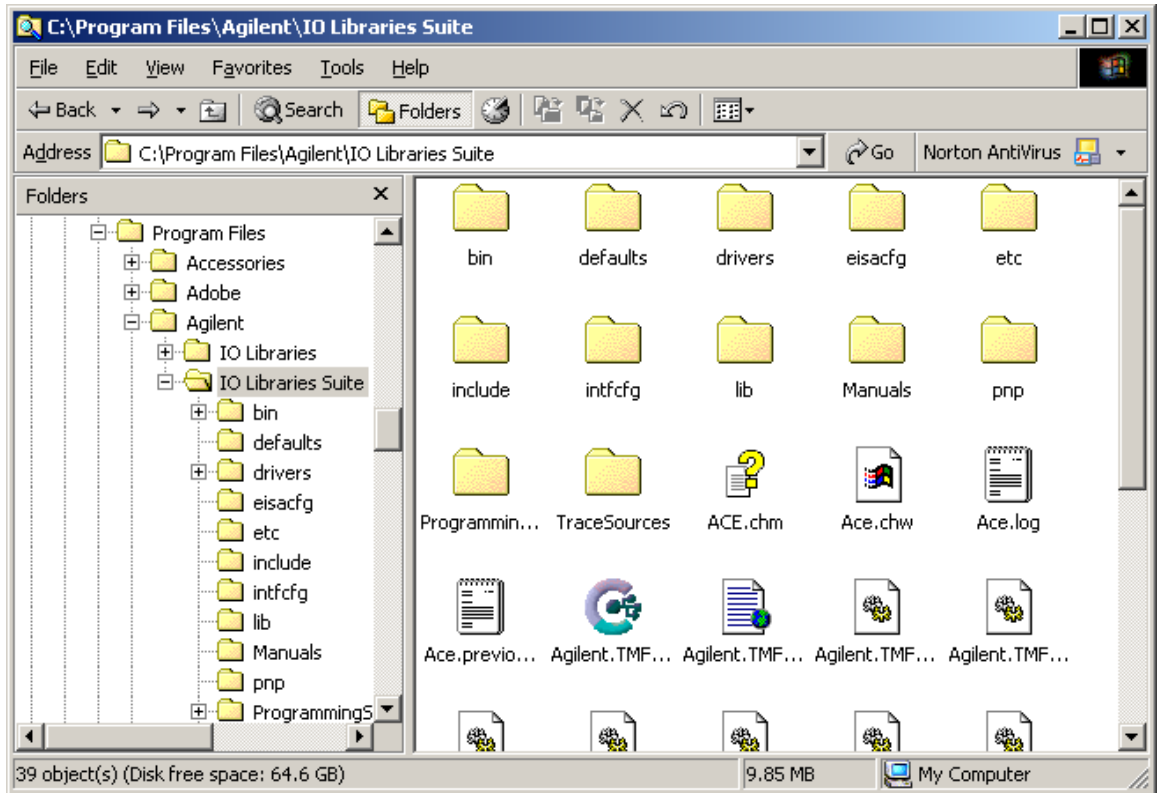
1. **Uninstall the existing IO Libraries (optional).** Uninstalling the existing version of the IO Libraries, allows for a cleaner installation process with fewer potential problems. After the existing IO Libraries are uninstalled, please reboot the computer.
2. **Install the Agilent IO Libraries Suite 14 (E2094N).** On the last dialog called “Install Wizard Complete”, unclick on “Yes, I want to connect to my instrument. Launch Agilent Connection Expert.” Press the “Finish” button to close the dialog.



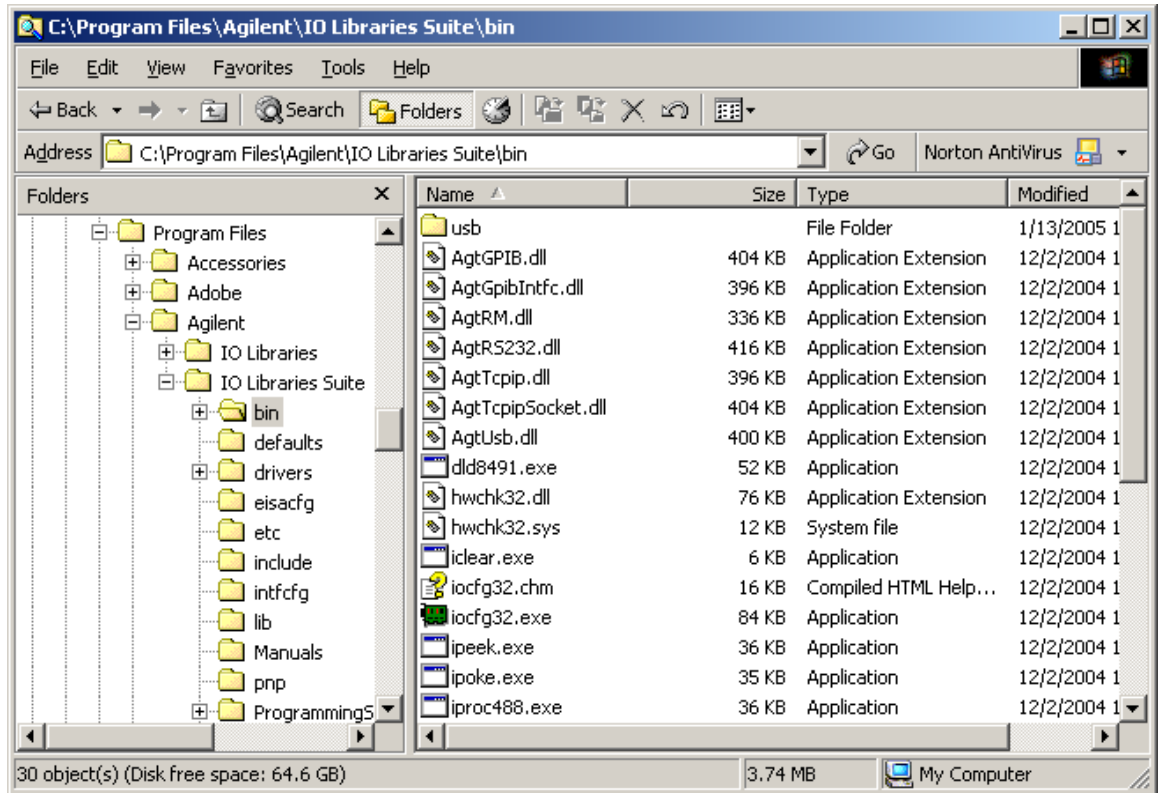
3. **Install the TAMS IO Product Software.** The Installer should automatically detect the new SICL Directory. In the SICL directory path dialog, the SICL directory path should be “C:\Program Files\Agilent\IO Libraries Suite\” if the IO Libraries were installed in the default location. Please note that this is different from previous IO Libraries, which were installed in “C:\Program Files\Agilent\IO Libraries”. If you installed the IO Libraries in a different location, please change the Destination Folder to match the directory where the IO Libraries are installed. After installation is completed, please reboot the computer.

4. **Configure the TAMS IO Interface.** You need to run the Agilent IO Config utility to configure the TAMS IO Interface. Right Click on the Start button, and select “Explore”. Change the address to the install directory of the Agilent IO Libraries.

The default directory is: C:\Program Files\Agilent\IO Libraries Suite

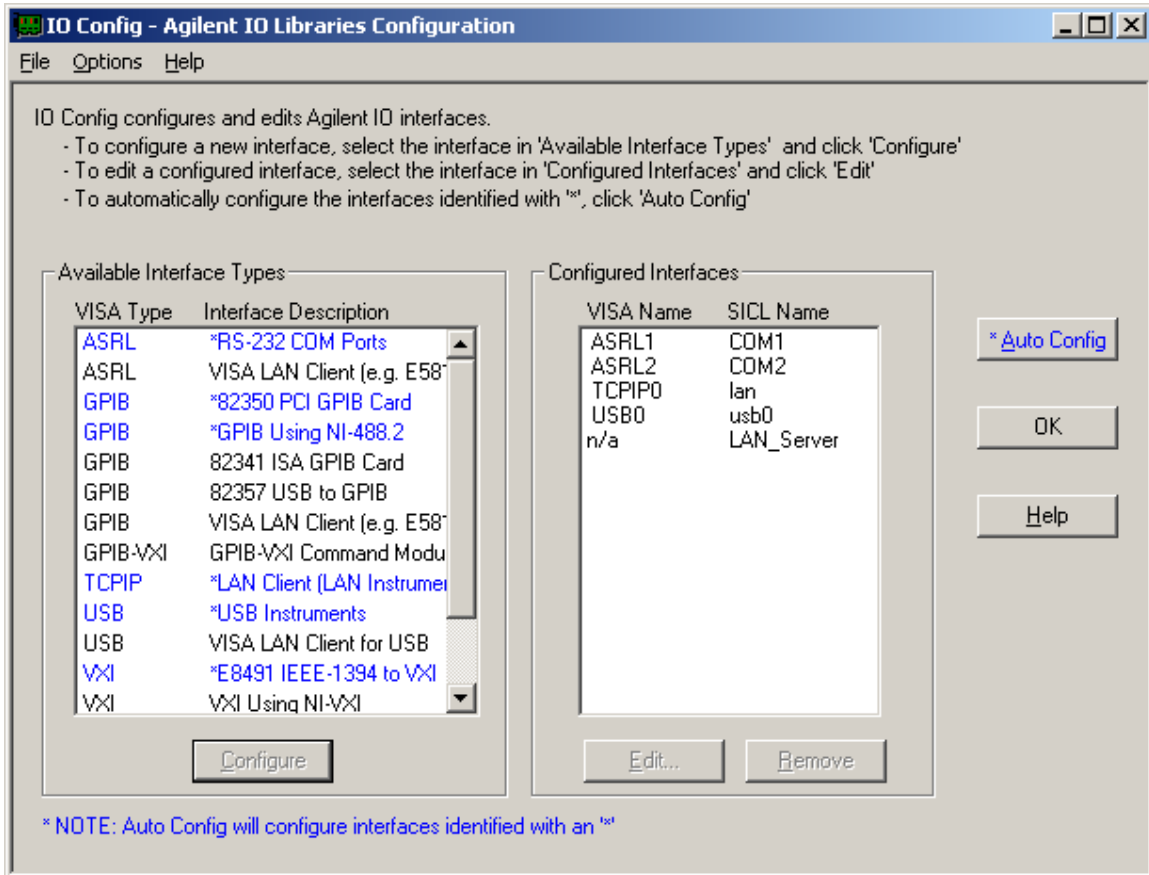


Click on the “bin” directory.



Double click on "iocfg32.exe" to start the Agilent IO Config utility.

5. Follow the instructions in the TAMS IO Product's Manual on how to use IO Config to configure the TAMS IO Interface. After completing this step, the TAMS IO Interface is ready to be used by the Agilent IO Libraries Suite 14.

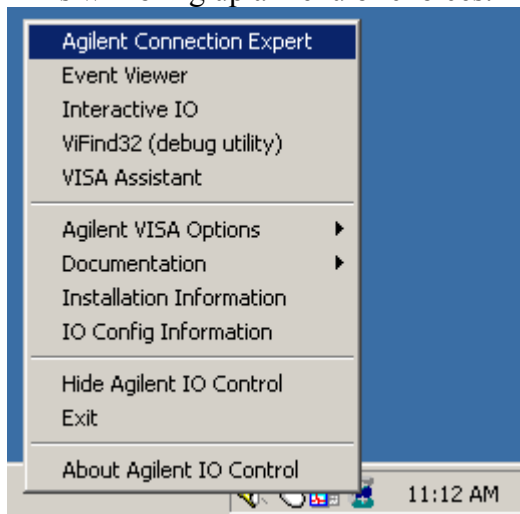


You can now use the Agilent Connection Expert (ACE) to find and communicate with instruments. However, if you need to change the configuration information for the TAMS IO Interface, you will have to use the IO Config Utility.

To start ACE, click on the Agilent IO Control in the Taskbar



This will bring up a menu of choices.

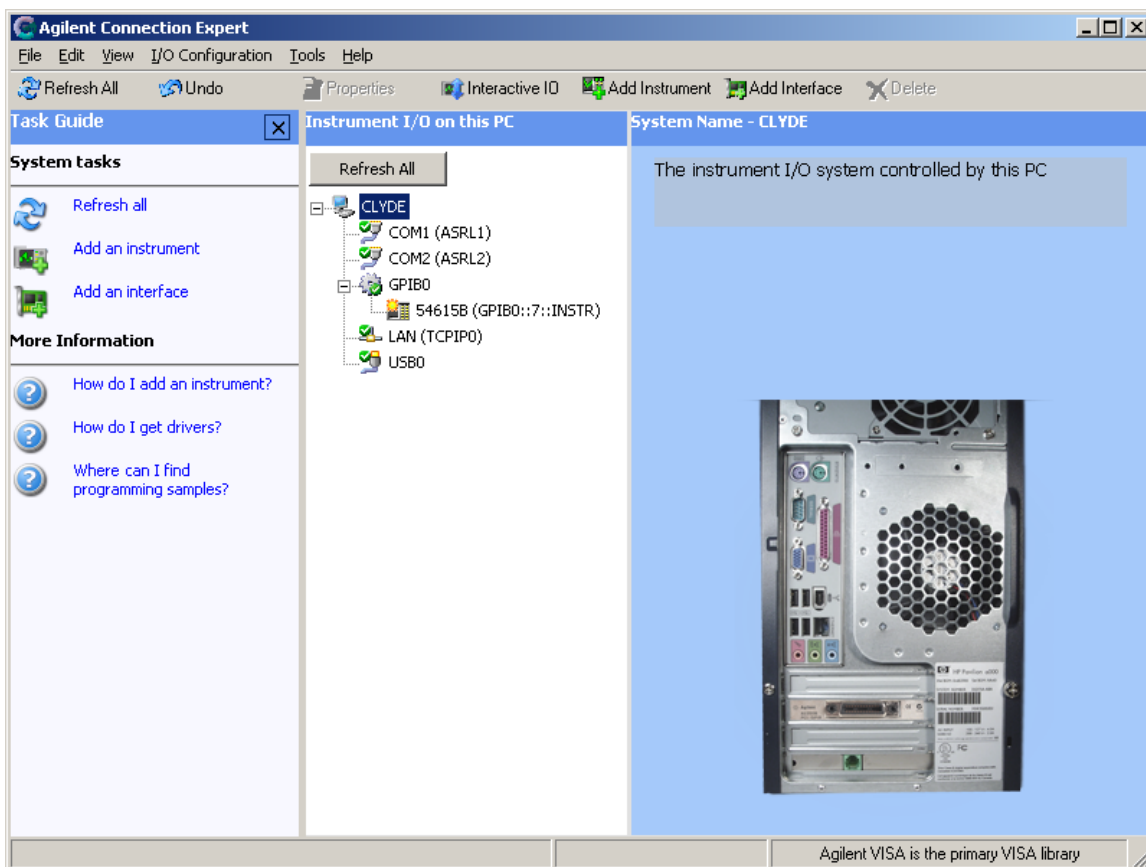


Click on “Agilent Connection Expert”, this will start ACE.

Alternatively, you can also start ACE, from the Start Button:

Start → Programs → Agilent IO Suite → Agilent Connection Expert

This will bring up the Agilent Connection Expert



The GPIB0 interface in this example is a TAMS 63488 USB/GPIB Controller. It is connected to an HP 54615 Oscilloscope.

Currently, you can not perform any Interface configuration items on the TAMS IO Interfaces using ACE. If you need to configure an IO Interface parameter such as the GPIB Bus Address, System Controller Status, SICL Interface Name, or VISA Resource Name, then you need to use the ioconfig utility (iocfg32.exe) described earlier.

Once the TAMS Interface is configured, you can use ACE to find and communicate with instruments.